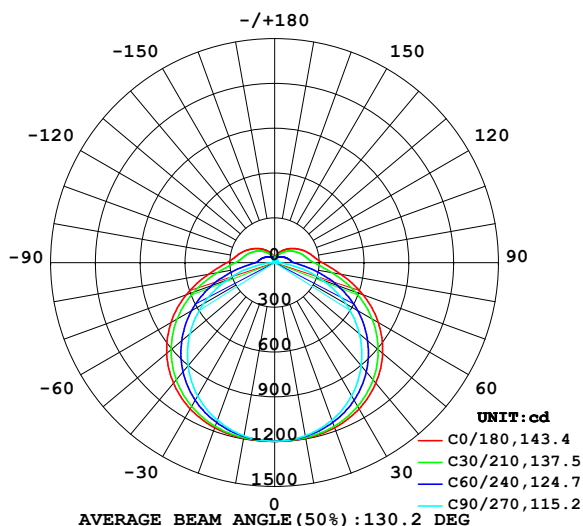


## LUMINAIRE PHOTOMETRIC TEST REPORT

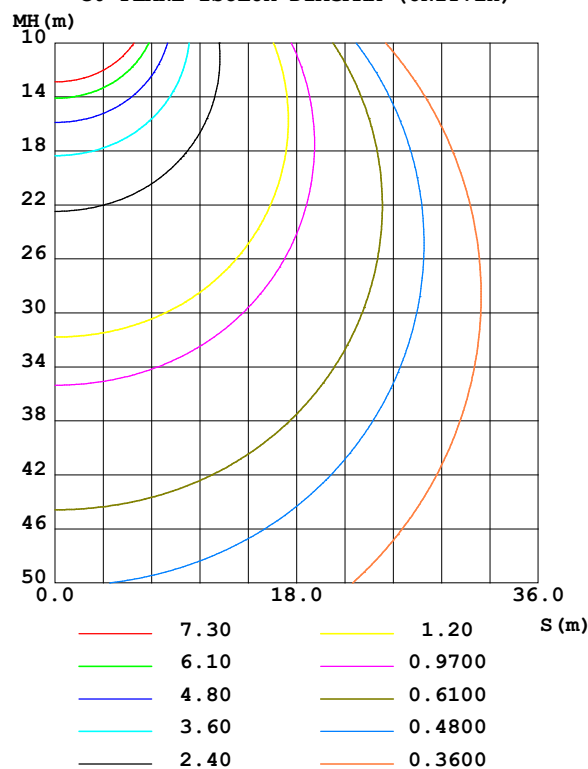
Test:U:230.37V I:0.1678A P:37.216W PF:0.9629 Freq:49.99Hz		
UTHDi:0.21% ITHDi:10.39% KDisp:0.9608 Lamp Flux:4987.29x1 lm		
NAME: NU28-LC-39W-1200K-40H	TYPE:	WEIGHT:
SPEC.:	DIM.:	SERIAL No.:
MFR.: Ervan	SUR.:	Shielding Angle:

DATA OF LAMP		PHOTOMETRIC DATA Eff: 134.01 lm/W			
MODEL	NU28	I <sub>max</sub> (cd)	1196	S/MH(C0/180)	1.41
NOMINAL POWER(W)	39	LOR(%)	100.0	S/MH(C90/270)	1.28
RATED VOLTAGE(V)	230	TOTAL FLUX(lm)	4987.3	□ UP,DN(C0-180)	6.8,43.2
NOMINAL FLUX(lm)	4987.29	CIE CLASS	SEMI-D.	□ UP,DN(C180-360)	6.8,43.2
LAMPS INSIDE	1	□ up (%)	13.7	CIBSE SHR NOM	1.50
TEST VOLTAGE(V)	230	□ down (%)	86.3	CIBSE SHR MAX	1.55

LUMINOUS INTENSITY DISTRIBUTION DIAGRAM



C0 PLANE ISOLUX DIAGRAM (UNIT:lx)



C Range: 0 - 360DEG  
 C Interval: 15.0DEG  
 Test Speed: HIGH  
 Temperature: 25.3°C  
 Operators: QC  
 Test Date: 2022-06-20

□ Range: 0 - 180DEG  
 □ Interval: 1.0DEG  
 Test System: EVERFINE GO-2000A\_V1 SYSTEM V2.00.458  
 Humidity: 65.0%  
 Test Distance: 10.640m [K=1.0000]  
 Remarks:

## ZONAL FLUX DIAGRAM

### ZONAL FLUX DIAGRAM:

°	C0	C45	C90	C135	C180	C225	C270	C315	°	□ zone	□ total	%lum, lamp
10	1194	1187	1178	1187	1194	1187	1178	1187	0- 10	113.7	113.7	2.28,2.28
20	1177	1154	1123	1154	1177	1154	1123	1154	10- 20	331.6	445.4	8.93,8.93
30	1131	1090	1031	1090	1131	1090	1031	1090	20- 30	518.3	963.7	19.3,19.3
40	1054	993.4	903.0	993.4	1054	993.4	903.0	993.4	30- 40	651.6	1615	32.4,32.4
50	944.3	863.0	741.0	863.0	944.3	863.0	741.0	863.0	40- 50	713.4	2329	46.7,46.7
60	801.8	702.1	550.7	702.1	801.8	702.1	550.7	702.1	50- 60	693.9	3023	60.6,60.6
70	630.0	516.6	339.2	516.6	630.0	516.6	339.2	516.6	60- 70	593.2	3616	72.5,72.5
80	450.1	327.1	128.9	327.1	450.1	327.1	128.9	327.1	70- 80	428.8	4045	81.1,81.1
90	320.5	202.7	7.655	202.7	320.5	202.7	7.655	202.7	80- 90	261.7	4306	86.3,86.3
100	261.0	165.2	9.834	165.2	261.0	165.2	9.834	165.2	90-100	181.9	4488	90,90
110	221.8	141.1	12.63	141.1	221.8	141.1	12.63	141.1	100-110	149.9	4638	93,93
120	183.7	116.0	15.52	116.0	183.7	116.0	15.52	116.0	110-120	119.2	4757	95.4,95.4
130	148.4	91.68	18.44	91.68	148.4	91.68	18.44	91.68	120-130	89.17	4846	97.2,97.2
140	116.8	72.57	21.39	72.57	116.8	72.57	21.39	72.57	130-140	62.53	4909	98.4,98.4
150	88.28	57.18	23.95	57.18	88.28	57.18	23.95	57.18	140-150	40.60	4950	99.2,99.2
160	62.83	44.63	26.02	44.63	62.83	44.63	26.02	44.63	150-160	23.55	4973	99.7,99.7
170	40.30	34.32	27.54	34.32	40.30	34.32	27.54	34.32	160-170	11.12	4984	99.9,99.9
180	27.75	28.06	28.23	28.06	27.75	28.06	28.23	28.06	170-180	2.988	4987	100,100
DEG	LUMINOUS INTENSITY:cd									UNIT:lm		

Conical surface Flux(90deg): 1969.2 lm

%lum = 39.5%

%lamp = 39.5%

Conical surface Flux(130deg): 3336.5 lm

%lum = 66.9%

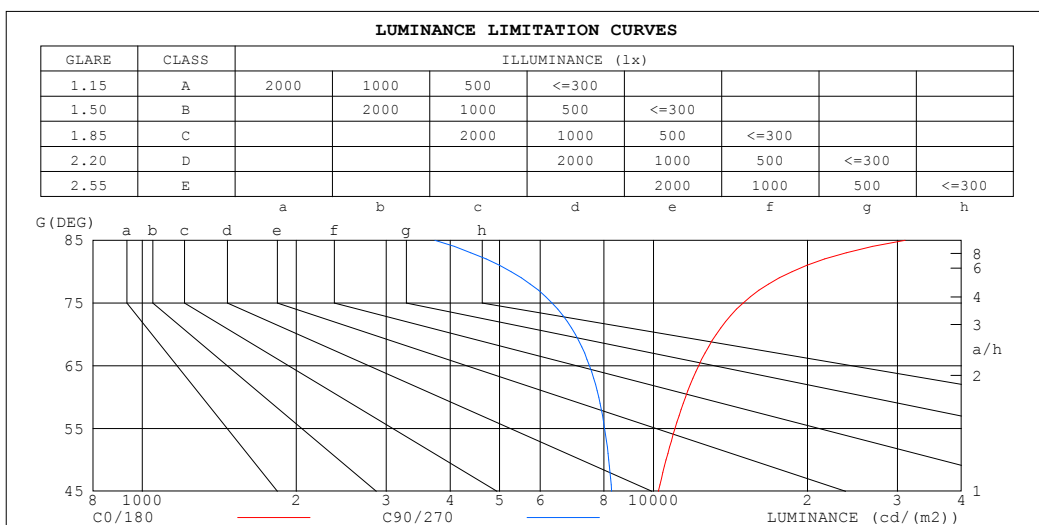
%lamp = 66.9%

C Range: 0 - 360DEG  
 C Interval: 15.0DEG  
 Test Speed: HIGH  
 Temperature:25.3℃  
 Operators:QC  
 Test Date:2022-06-20

□ Range: 0 - 180DEG  
 □ Interval: 1.0DEG  
 Test System:EVERFINE GO-2000A\_V1 SYSTEM V2.00.458  
 Humidity:65.0%  
 Test Distance:10.640m [K=1.0000]  
 Remarks:

### LUMINANCE LIMITATION CURVES

Test:U:230.37V I:0.1678A P:37.216W PF:0.9629 Freq:49.99Hz		
UTHDi:0.21% ITHDi:10.39% KDisp:0.9608 Lamp Flux:4987.29x1 lm		
NAME: NU28-LC-39W-1200K-40H	TYPE:	WEIGHT:
SPEC.:	DIM.:	SERIAL No.:
MFR.: Ervan	SUR.:	Shielding Angle:



LUMINANCE cd/(m2)		
G (DEG)	C0/180	C90/270
85	31036	3736
80	18671	5264
75	14971	6333
70	13267	7031
65	12251	7493
60	11550	7808
55	11015	8024
50	10581	8173
45	10221	8282

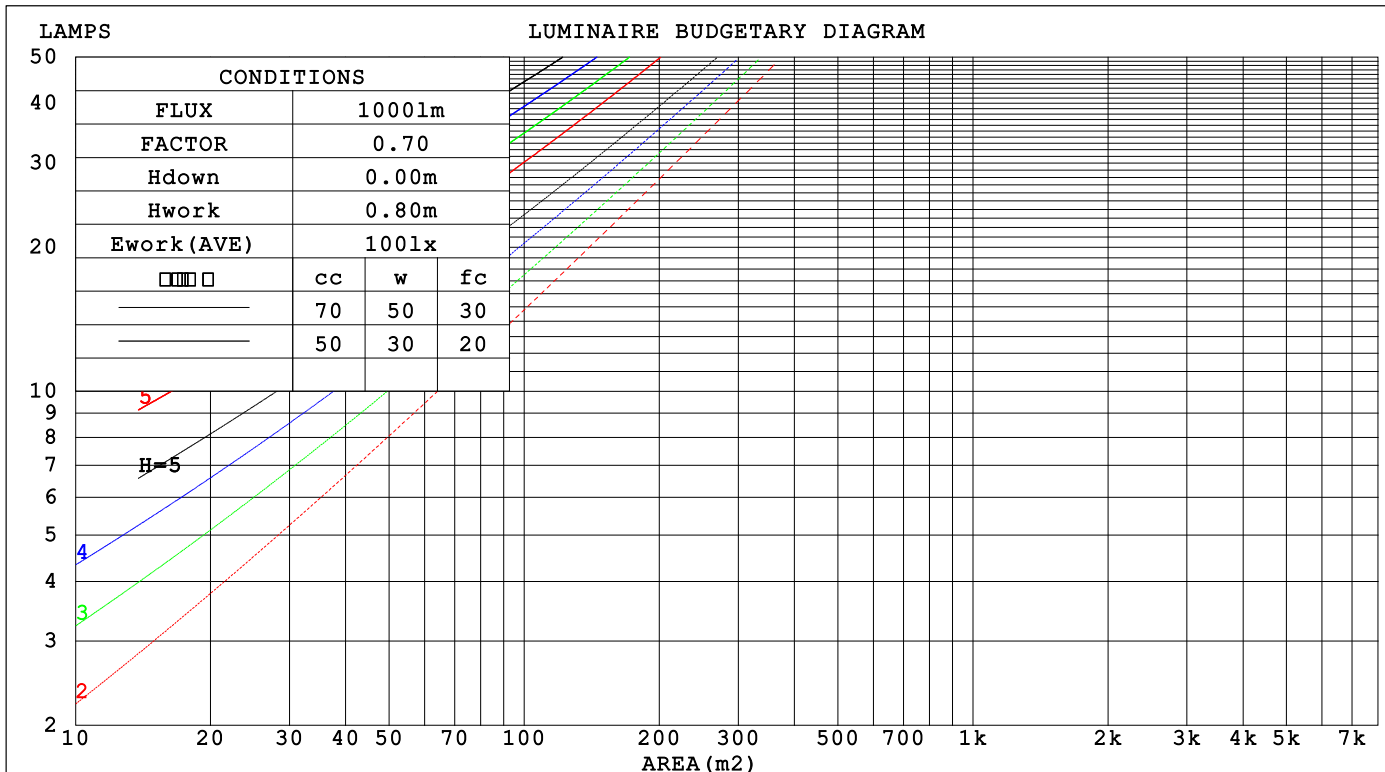
C Range: 0 - 360DEG  
C Interval: 15.0DEG  
Test Speed: HIGH  
Temperature:25.3°C  
Operators:QC  
Test Date:2022-06-20

☐ Range: 0 - 180DEG  
☐ Interval: 1.0DEG  
Test System:EVERFINE GO-2000A\_V1 SYSTEM V2.00.458  
Humidity:65.0%  
Test Distance:10.640m [K=1.0000]  
Remarks:

## CU AND LUMINAIRE BUDGETARY ESTIMATE DIAGRAM

Test:U:230.37V I:0.1678A P:37.216W PF:0.9629 Freq:49.99Hz		
UTHDi:0.21% ITHDi:10.39% KDisp:0.9608		Lamp Flux:4987.29x1 lm
NAME: NU28-LC-39W-1200K-40H	TYPE:	WEIGHT:
SPEC.:	DIM.:	SERIAL No.:
MFR.: Ervan	SUR.:	Shielding Angle:

□cc	80%			70%			50%			30%			10%			0
□w	50%	30%	10%	50%	30%	10%	50%	30%	10%	50%	30%	10%	50%	30%	10%	0
□fc	20%			20%			20%			20%			20%			0
RCR	RCR:Room Cavity Ratio                      Coefficients of Utilization(CU)															
0.0	1.16	1.16	1.16	1.12	1.12	1.12	1.04	1.04	1.04	.96	.96	.96	.90	.90	.90	.86
1.0	.98	.93	.89	.94	.90	.86	.88	.84	.81	.81	.78	.76	.76	.73	.71	.68
2.0	.84	.77	.70	.81	.74	.69	.75	.70	.65	.70	.65	.61	.65	.61	.58	.55
3.0	.73	.65	.58	.71	.63	.56	.66	.59	.53	.61	.55	.51	.57	.52	.48	.45
4.0	.64	.55	.48	.62	.54	.47	.58	.51	.45	.54	.48	.43	.50	.45	.41	.38
5.0	.57	.48	.41	.55	.47	.40	.52	.44	.38	.48	.42	.37	.45	.39	.35	.32
6.0	.51	.42	.35	.50	.41	.35	.46	.39	.33	.43	.37	.32	.40	.35	.31	.28
7.0	.46	.37	.31	.45	.36	.30	.42	.35	.29	.39	.33	.28	.37	.31	.27	.25
8.0	.42	.33	.27	.41	.33	.27	.38	.31	.26	.36	.30	.25	.34	.28	.24	.22
9.0	.38	.30	.24	.37	.29	.24	.35	.28	.23	.33	.27	.22	.31	.26	.21	.19
10.0	.35	.27	.22	.34	.27	.22	.32	.26	.21	.31	.24	.20	.29	.23	.19	.18



C Range: 0 - 360DEG  
C Interval: 15.0DEG  
Test Speed: HIGH  
Temperature:25.3℃  
Operators:QC  
Test Date:2022-06-20

□ Range: 0 - 180DEG  
□ Interval: 1.0DEG  
Test System:EVERFINE GO-2000A\_V1 SYSTEM V2.00.458  
Humidity:65.0%  
Test Distance:10.640m [K=1.0000]  
Remarks:

### WEC AND CCEC

Test:U:230.37V I:0.1678A P:37.216W PF:0.9629 Freq:49.99Hz		
UTHDi:0.21% ITHDi:10.39% KDisp:0.9608		Lamp Flux:4987.29x1 lm
NAME: NU28-LC-39W-1200K-40H	TYPE:	WEIGHT:
SPEC.:	DIM.:	SERIAL No.:
MFR.: Ervan	SUR.:	Shielding Angle:

<input type="checkbox"/> cc	80%	70%	50%	30%	10%	0
<input type="checkbox"/> w	50% 30% 10%	50% 30% 10%	50% 30% 10%	50% 30% 10%	50% 30% 10%	0
<input type="checkbox"/> fc	20%	20%	20%	20%	20%	0
RCR	RCR:Room Cavity Ratio		Wall Exitance Coefficients(WEC)			
0.0						
1.0	.358 .204 .065	.347 .198 .063	.326 .187 .060	.306 .177 .057	.288 .167 .054	
2.0	.319 .175 .054	.309 .170 .052	.290 .161 .050	.272 .153 .048	.256 .145 .046	
3.0	.288 .153 .046	.279 .149 .045	.261 .142 .043	.245 .134 .041	.231 .128 .040	
4.0	.261 .136 .040	.253 .132 .039	.237 .126 .038	.223 .120 .036	.209 .114 .035	
5.0	.239 .122 .035	.231 .119 .035	.217 .113 .033	.204 .108 .032	.192 .103 .031	
6.0	.220 .110 .032	.213 .108 .031	.200 .103 .030	.188 .098 .029	.177 .093 .028	
7.0	.203 .101 .028	.197 .098 .028	.185 .094 .027	.174 .089 .026	.164 .085 .025	
8.0	.189 .092 .026	.183 .090 .026	.173 .086 .025	.163 .082 .024	.153 .079 .023	
9.0	.176 .085 .024	.171 .083 .023	.161 .080 .023	.152 .076 .022	.143 .073 .021	
10.0	.165 .079 .022	.161 .078 .022	.151 .074 .021	.143 .071 .020	.135 .068 .019	

<input type="checkbox"/> cc	80%	70%	50%	30%	10%	0
<input type="checkbox"/> w	50% 30% 10%	50% 30% 10%	50% 30% 10%	50% 30% 10%	50% 30% 10%	0
<input type="checkbox"/> fc	20%	20%	20%	20%	20%	0
RCR	RCR:Room Cavity Ratio		Ceiling Cavity Exitance Coefficients(CCEC)			
0.0	.295 .295 .295	.252 .252 .252	.172 .172 .172	.099 .099 .099	.032 .032 .032	
1.0	.289 .261 .235	.247 .224 .203	.169 .154 .140	.097 .089 .081	.031 .029 .026	
2.0	.281 .237 .200	.241 .204 .173	.165 .141 .121	.095 .082 .071	.031 .027 .023	
3.0	.274 .221 .178	.235 .190 .154	.161 .132 .108	.093 .077 .064	.030 .025 .021	
4.0	.266 .208 .163	.229 .180 .142	.157 .125 .100	.091 .073 .059	.029 .024 .019	
5.0	.259 .198 .153	.222 .171 .133	.153 .120 .094	.089 .070 .056	.029 .023 .018	
6.0	.252 .190 .146	.216 .164 .127	.149 .115 .090	.087 .068 .053	.028 .022 .018	
7.0	.245 .183 .140	.210 .159 .122	.145 .111 .087	.084 .066 .052	.027 .021 .017	
8.0	.238 .178 .136	.205 .154 .119	.142 .108 .084	.083 .064 .050	.027 .021 .017	
9.0	.232 .173 .133	.200 .150 .116	.138 .105 .082	.081 .062 .049	.026 .020 .016	
10.0	.226 .169 .130	.195 .146 .114	.135 .103 .081	.079 .061 .048	.026 .020 .016	

C Range: 0 - 360DEG  
C Interval: 15.0DEG  
Test Speed: HIGH  
Temperature:25.3℃  
Operators:QC  
Test Date:2022-06-20

☐ Range: 0 - 180DEG  
☐ Interval: 1.0DEG  
Test System:EVERFINE GO-2000A\_V1 SYSTEM V2.00.458  
Humidity:65.0%  
Test Distance:10.640m [K=1.0000]  
Remarks:

### UGR(Unified Glare Rating) Table

Test:U:230.37V I:0.1678A P:37.216W PF:0.9629 Freq:49.99Hz UTHDi:0.21% ITHDi:10.39% KDisp:0.9608Lamp Flux:4987.29x1 lm											
NAME: NU28-LC-39W-1200K-40H					TYPE:			WEIGHT:			
SPEC.:					DIM.:			SERIAL No.:			
MFR.: Ervan					SUR.:			Shielding Angle:			
ceiling/cavity		0.7	0.7	0.5	0.5	0.3	0.7	0.7	0.5	0.5	0.3
walls		0.5	0.3	0.5	0.3	0.3	0.5	0.3	0.5	0.3	0.3
working plane		0.2	0.2	0.2	0.2	0.2	0.2	0.2	0.2	0.2	0.2
Room dimensions		Viewed crosswise					Viewed endwise				
x = 2H y = 2H		15.2	16.6	15.6	17.0	17.5	13.6	15.0	14.1	15.4	15.9
3H		17.5	18.7	17.9	19.2	19.7	15.1	16.4	15.6	16.8	17.4
4H		18.6	19.8	19.1	20.3	20.9	15.6	16.9	16.1	17.4	17.9
6H		19.8	21.0	20.3	21.5	22.0	16.0	17.2	16.5	17.7	18.2
8H		20.5	21.6	21.0	22.1	22.7	16.1	17.2	16.6	17.7	18.3
12H		21.2	22.3	21.7	22.8	23.4	16.1	17.2	16.7	17.7	18.3
4H 2H		15.7	17.0	16.2	17.4	18.0	14.6	15.8	15.1	16.3	16.8
3H		18.2	19.3	18.8	19.8	20.4	16.3	17.3	16.8	17.9	18.5
4H		19.5	20.5	20.1	21.1	21.7	17.0	18.0	17.5	18.5	19.1
6H		21.0	21.8	21.5	22.4	23.1	17.5	18.4	18.1	18.9	19.6
8H		21.7	22.5	22.3	23.1	23.8	17.6	18.4	18.2	19.0	19.7
12H		22.6	23.4	23.2	24.0	24.7	17.7	18.5	18.3	19.1	19.8
8H 4H		19.8	20.6	20.4	21.2	21.9	17.7	18.5	18.3	19.1	19.8
6H		21.5	22.2	22.1	22.8	23.5	18.5	19.1	19.1	19.8	20.5
8H		22.4	23.1	23.1	23.7	24.4	18.8	19.4	19.4	20.0	20.8
12H		23.6	24.1	24.2	24.8	25.5	19.0	19.5	19.6	20.2	20.9
12H 4H		19.8	20.6	20.4	21.2	21.9	17.9	18.6	18.5	19.2	19.9
6H		21.6	22.2	22.2	22.8	23.6	18.8	19.4	19.5	20.1	20.8
8H		22.6	23.2	23.3	23.8	24.6	19.2	19.8	19.9	20.4	21.2
Variations with the observer position at spacings(CIE Pub.117):											
S = 1.0H		+ 0.1 / - 0.1					+ 0.1 / - 0.2				
1.5H		+ 0.2 / - 0.3					+ 0.2 / - 0.3				
2.0H		+ 0.2 / - 0.3					+ 0.2 / - 0.4				

CIE Pub.117, 4987 lm Total Lamp Luminous Flux Correct (8log(F/F0) = 5.6)  
Area: 0.1407 m2

C Range: 0 - 360DEG  
C Interval: 15.0DEG  
Test Speed: HIGH  
Temperature:25.3℃  
Operators:QC  
Test Date:2022-06-20

☐ Range: 0 - 180DEG  
☐ Interval: 1.0DEG  
Test System:EVERFINE GO-2000A\_V1 SYSTEM V2.00.458  
Humidity:65.0%  
Test Distance:10.640m [K=1.0000]  
Remarks:

### UTILIZATION FACTORS TABLE

Test:U:230.37V I:0.1678A P:37.216W PF:0.9629 Freq:49.99Hz		
UTHDi:0.21% ITHDi:10.39% KDisp:0.9608 Lamp Flux:4987.29x1 lm		
NAME: NU28-LC-39W-1200K-40H	TYPE:	WEIGHT:
SPEC.:	DIM.:	SERIAL No.:
MFR.: Ervan	SUR.:	Shielding Angle:

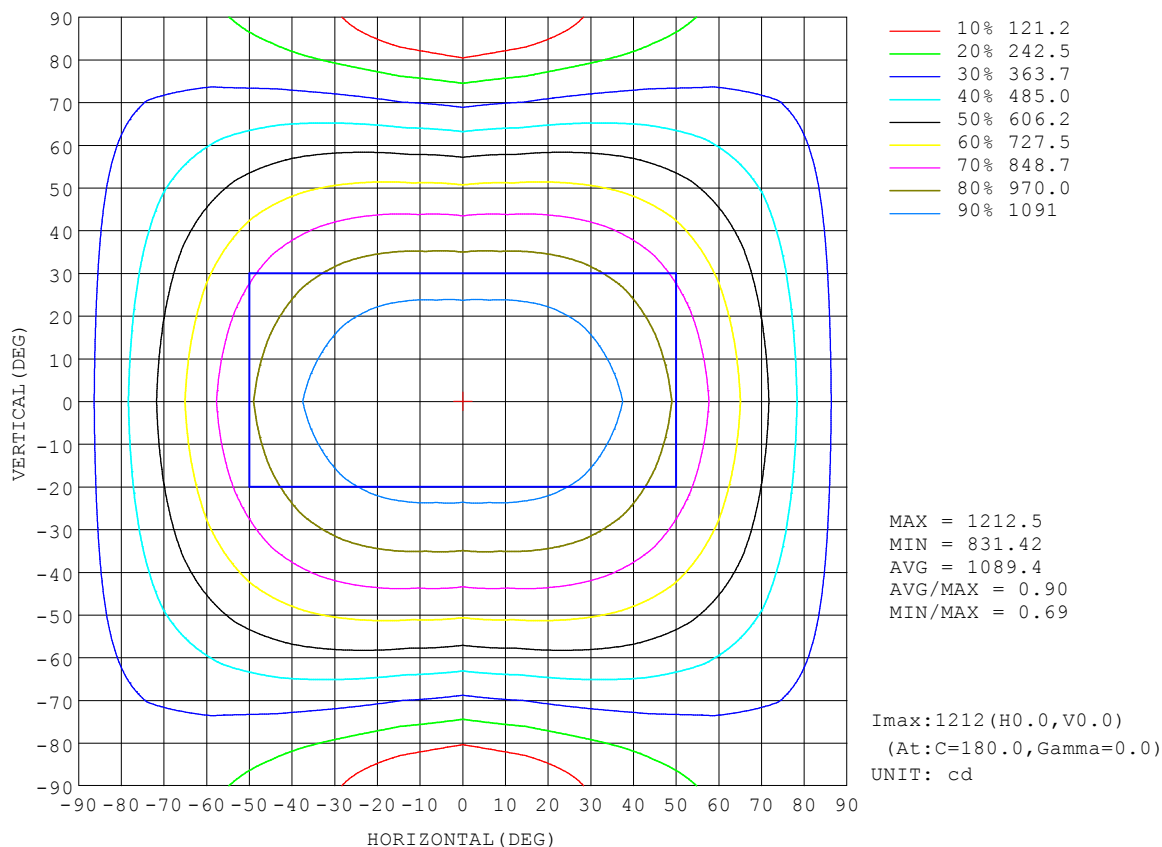
REFLECTANCE										
Ceiling	0.8	0.8	0.8	0.7	0.7	0.7	0.5	0.5	0.5	0
Walls	0.7	0.5	0.3	0.7	0.5	0.3	0.7	0.5	0.3	0
Working plane	0.2	0.2	0.2	0.2	0.2	0.2	0.2	0.2	0.2	0
ROOM INDEX	UTILIZATION FACTORS (PERCENT) $k(RI) \times RCR = 5$									
$k = 0.60$	50	38	31	49	37	30	47	37	30	23
0.80	60	47	39	58	46	39	55	45	38	30
1.00	68	55	47	66	54	47	62	55	45	37
1.25	75	63	54	72	61	54	69	59	52	43
1.50	80	68	60	77	67	59	73	64	57	47
2.00	87	77	69	84	75	68	79	71	65	54
2.50	91	82	75	88	80	73	83	76	70	58
3.00	95	87	80	92	84	78	86	79	74	62
4.00	100	92	86	96	90	84	90	84	80	67
5.00	102	96	91	99	93	88	92	87	84	70
ROOM INDEX	UF (total)									Direct
According to DIN EN 13032-2 2004			Suspended					SHRNOM = 1.25		

C Range: 0 - 360DEG  
C Interval: 15.0DEG  
Test Speed: HIGH  
Temperature: 25.3°C  
Operators: QC  
Test Date: 2022-06-20

☐ Range: 0 - 180DEG  
☐ Interval: 1.0DEG  
Test System: EVERFINE GO-2000A\_V1 SYSTEM V2.00.458  
Humidity: 65.0%  
Test Distance: 10.640m [K=1.0000]  
Remarks:

### ISOCANDELA DIAGRAM

Test:U:230.37V I:0.1678A P:37.216W PF:0.9629 Freq:49.99Hz		
UTHDi:0.21% ITHDi:10.39% KDisp:0.9608 Lamp Flux:4987.29x1 lm		
NAME: NU28-LC-39W-1200K-40H	TYPE:	WEIGHT:
SPEC.:	DIM.:	SERIAL No.:
MFR.: Ervan	SUR.:	Shielding Angle:



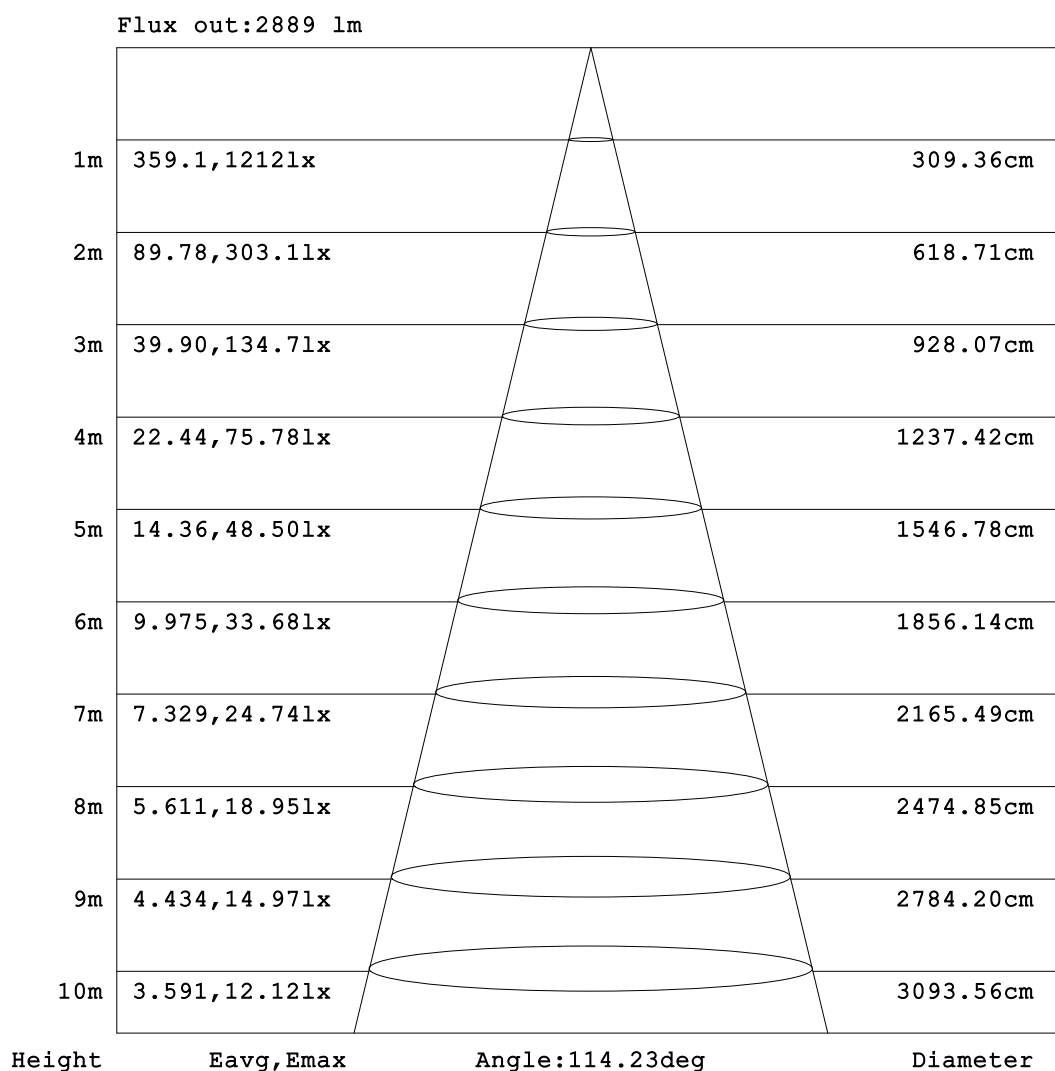
C Range: 0 - 360DEG  
C Interval: 15.0DEG  
Test Speed: HIGH  
Temperature:25.3°C  
Operators:QC  
Test Date:2022-06-20

☐ Range: 0 - 180DEG  
☐ Interval: 1.0DEG  
Test System:EVERFINE GO-2000A\_V1 SYSTEM V2.00.458  
Humidity:65.0%  
Test Distance:10.640m [K=1.0000]  
Remarks:



### AAI Figure

Test:U:230.37V I:0.1678A P:37.216W PF:0.9629 Freq:49.99Hz		
UTHDi:0.21% ITHDi:10.39% KDisp:0.9608 Lamp Flux:4987.29x1 lm		
NAME: NU28-LC-39W-1200K-40H	TYPE:	WEIGHT:
SPEC.:	DIM.:	SERIAL No.:
MFR.: Ervan	SUR.:	Shielding Angle:



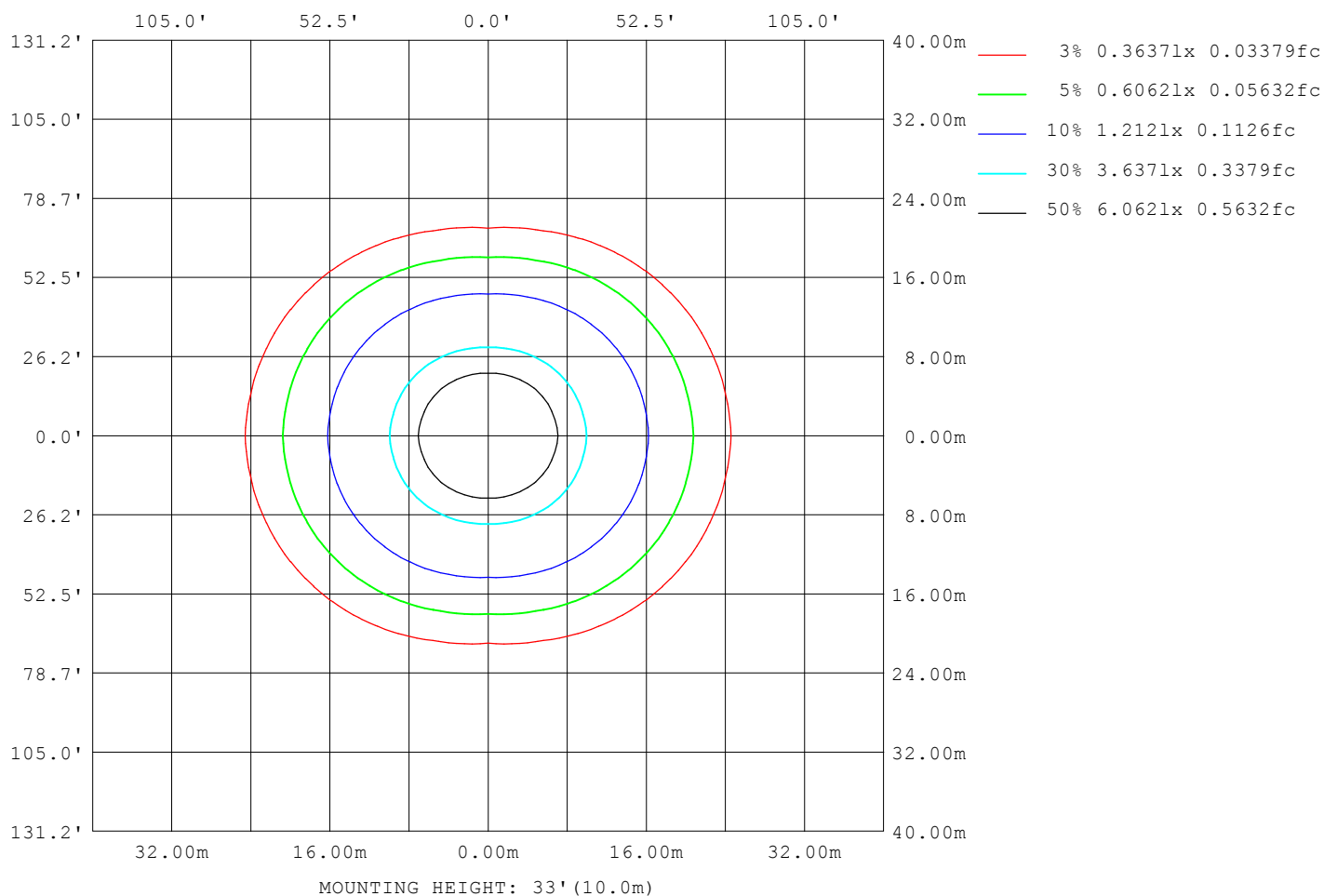
Note:The Curves indicate the illuminated area and the average illumination when the luminaire is at different distance.

C Range: 0 - 360DEG  
C Interval: 15.0DEG  
Test Speed: HIGH  
Temperature:25.3℃  
Operators:QC  
Test Date:2022-06-20

☐ Range: 0 - 180DEG  
☐ Interval: 1.0DEG  
Test System:EVERFINE GO-2000A\_V1 SYSTEM V2.00.458  
Humidity:65.0%  
Test Distance:10.640m [K=1.0000]  
Remarks:

### ISOLUX DIAGRAM

Test:U:230.37V I:0.1678A P:37.216W PF:0.9629 Freq:49.99Hz		
UTHDi:0.21% ITHDi:10.39% KDisp:0.9608 Lamp Flux:4987.29x1 lm		
NAME: NU28-LC-39W-1200K-40H	TYPE:	WEIGHT:
SPEC.:	DIM.:	SERIAL No.:
MFR.: Ervan	SUR.:	Shielding Angle:



C Range: 0 - 360DEG  
 C Interval: 15.0DEG  
 Test Speed: HIGH  
 Temperature:25.3°C  
 Operators:QC  
 Test Date:2022-06-20

☐ Range: 0 - 180DEG  
☐ Interval: 1.0DEG  
 Test System:EVERFINE GO-2000A\_V1 SYSTEM V2.00.458  
 Humidity:65.0%  
 Test Distance:10.640m [K=1.0000]  
 Remarks:

### LED Avg.L Report

Test:U:230.37V I:0.1678A P:37.216W PF:0.9629 Freq:49.99Hz UTHDi:0.21% ITHDi:10.39% KDisp:0.9608 Lamp Flux:4987.29x1 lm		
NAME: NU28-LC-39W-1200K-40H	TYPE:	WEIGHT:
SPEC.:	DIM.:	SERIAL No.:
MFR.: Ervan	SUR.:	Shielding Angle:

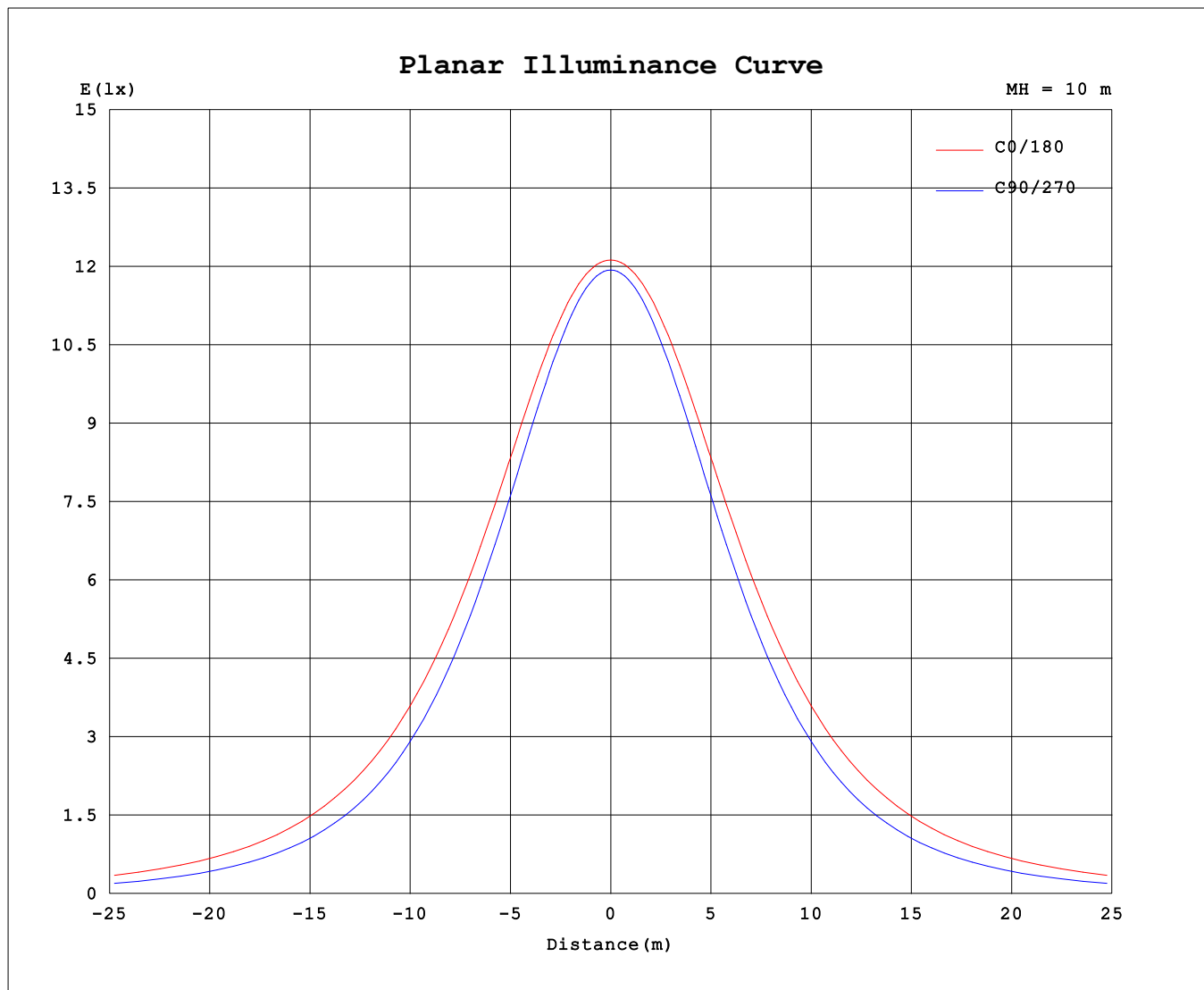
AvgL	cd/m2
L_0~180 (65) av	12089
L_0~180 (75) av	14773
L_0~180 (85) av	30624
L_90~270 (65) av	7512
L_90~270 (75) av	6349
L_90~270 (85) av	3745
L_45 (65) av	10287
L_45 (75) av	11518
L_45 (85) av	20493

Standard: GB/T 29293-2012

C Range: 0 - 360DEG  
C Interval: 15.0DEG  
Test Speed: HIGH  
Temperature:25.3℃  
Operators:QC  
Test Date:2022-06-20

☐ Range: 0 - 180DEG  
☐ Interval: 1.0DEG  
Test System:EVERFINE GO-2000A\_V1 SYSTEM V2.00.458  
Humidity:65.0%  
Test Distance:10.640m [K=1.0000]  
Remarks:

## Planar Illuminance Curve



C Range: 0 - 360DEG  
C Interval: 15.0DEG  
Test Speed: HIGH  
Temperature: 25.3°C  
Operators: QC  
Test Date: 2022-06-20

☐ Range: 0 - 180DEG  
☐ Interval: 1.0DEG  
Test System: EVERFINE GO-2000A\_V1 SYSTEM V2.00.458  
Humidity: 65.0%  
Test Distance: 10.640m [K=1.0000]  
Remarks:

### LUMINOUS DISTRIBUTION INTENSITY DATA

Test:U:230.37V I:0.1678A P:37.216W PF:0.9629 Freq:49.99Hz		
UTHDi:0.21% ITHDi:10.39% KDisp:0.9608		Lamp Flux:4987.29x1 lm
NAME: NU28-LC-39W-1200K-40H	TYPE:	WEIGHT:
SPEC.:	DIM.:	SERIAL No.:
MFR.: Ervan	SUR.:	Shielding Angle:

Table--1

UNIT: cd

C (DEG) □ (DEG)	0	15	30	45	60	75	90	105	120	135	150	165	180	195	210	225	240	255	270
0	1196	1196	1196	1196	1196	1196	1196	1196	1196	1196	1196	1196	1196	1196	1196	1196	1196	1196	1196
5	1196	1196	1195	1194	1193	1192	1192	1192	1193	1194	1195	1196	1196	1196	1195	1194	1193	1192	1192
10	1194	1194	1191	1187	1182	1179	1178	1179	1182	1187	1191	1194	1194	1194	1191	1187	1182	1179	1178
15	1189	1187	1182	1174	1165	1158	1155	1158	1165	1174	1182	1187	1189	1187	1182	1174	1165	1158	1155
20	1177	1174	1166	1154	1140	1128	1123	1128	1140	1154	1166	1174	1177	1174	1166	1154	1140	1128	1123
25	1158	1154	1143	1126	1107	1089	1082	1089	1107	1126	1143	1154	1158	1154	1143	1126	1107	1089	1082
30	1131	1126	1112	1090	1065	1041	1031	1041	1065	1090	1112	1126	1131	1126	1112	1090	1065	1041	1031
35	1097	1091	1073	1046	1014	985	972	985	1014	1046	1073	1091	1097	1091	1073	1046	1014	985	972
40	1054	1047	1026	993	955	920	903	920	955	993	1026	1047	1054	1047	1026	993	955	920	903
45	1003	995	970	932	888	846	826	846	888	932	970	995	1003	995	970	932	888	846	826
50	944	934	905	863	813	765	741	765	813	863	905	934	944	934	905	863	813	765	741
55	877	865	834	786	731	677	649	677	731	786	834	865	877	865	834	786	731	677	649
60	802	789	754	702	642	583	551	583	642	702	754	789	802	789	754	702	642	583	551
65	719	705	667	612	547	483	447	483	547	612	667	705	719	705	667	612	547	483	447
70	630	615	575	517	448	379	339	379	448	517	575	615	630	615	575	517	448	379	339
75	538	523	481	419	348	275	231	275	348	419	481	523	538	523	481	419	348	275	231
80	450	434	391	327	253	177	129	177	253	327	391	434	450	434	391	327	253	177	129
85	376	360	316	251	175	96.0	45.9	96.0	175	251	316	360	376	360	316	251	175	96.0	45.9
90	321	306	264	203	130	54.6	7.66	54.6	130	203	264	306	321	306	264	203	130	54.6	7.66
95	284	271	233	178	113	47.1	8.47	47.1	113	178	233	271	284	271	233	178	113	47.1	8.47
100	261	249	215	165	105	43.9	9.83	43.9	105	165	215	249	261	249	215	165	105	43.9	9.83
105	241	230	200	153	97.5	41.9	11.3	41.9	97.5	153	200	230	241	230	200	153	97.5	41.9	11.3
110	222	212	184	141	89.8	39.8	12.6	39.8	89.8	141	184	212	222	212	184	141	89.8	39.8	12.6
115	202	193	167	130	82.1	38.1	14.1	38.1	82.1	130	167	193	202	193	167	130	82.1	38.1	14.1
120	184	175	153	116	73.8	36.7	15.5	36.7	73.8	116	153	175	184	175	153	116	73.8	36.7	15.5
125	166	158	139	103	67.2	35.3	17.0	35.3	67.2	103	139	158	166	158	139	103	67.2	35.3	17.0
130	148	142	124	91.7	61.6	33.9	18.4	33.9	61.6	91.7	124	142	148	142	124	91.7	61.6	33.9	18.4
135	132	127	108	81.4	56.8	33.0	19.9	33.0	56.8	81.4	108	127	132	127	108	81.4	56.8	33.0	19.9
140	117	112	92.9	72.6	52.0	32.2	21.4	32.2	52.0	72.6	92.9	112	117	112	92.9	72.6	52.0	32.2	21.4
145	102	98.3	80.5	64.8	47.6	31.7	22.7	31.7	47.6	64.8	80.5	98.3	102	98.3	80.5	64.8	47.6	31.7	22.7
150	88.3	84.1	69.5	57.2	43.7	31.1	24.0	31.1	43.7	57.2	69.5	84.1	88.3	84.1	69.5	57.2	43.7	31.1	24.0
155	75.2	70.3	60.3	50.5	40.4	30.6	25.0	30.6	40.4	50.5	60.3	70.3	75.2	70.3	60.3	50.5	40.4	30.6	25.0
160	62.8	56.4	51.1	44.6	37.4	30.1	26.0	30.1	37.4	44.6	51.1	56.4	62.8	56.4	51.1	44.6	37.4	30.1	26.0
165	51.1	46.3	43.0	39.3	34.4	29.5	26.9	29.5	34.4	39.3	43.0	46.3	51.1	46.3	43.0	39.3	34.4	29.5	26.9
170	40.3	37.9	36.3	34.3	31.6	28.8	27.5	28.8	31.6	34.3	36.3	37.9	40.3	37.9	36.3	34.3	31.6	28.8	27.5
175	32.1	31.3	31.0	30.2	29.2	28.4	28.0	28.4	29.2	30.2	31.0	31.3	32.1	31.3	31.0	30.2	29.2	28.4	28.0
180	27.7	28.0	28.0	28.1	28.2	28.2	28.2	28.2	28.2	28.1	28.0	28.0	27.7	28.0	28.0	28.1	28.2	28.2	28.2

C Range: 0 - 360DEG

C Interval: 15.0DEG

Test Speed: HIGH

Temperature:25.3℃

Operators:QC

Test Date:2022-06-20

□ Range: 0 - 180DEG

□ Interval: 1.0DEG

Test System:EVERFINE GO-2000A\_V1 SYSTEM V2.00.458

Humidity:65.0%

Test Distance:10.640m [K=1.0000]

Remarks:

### LUMINOUS DISTRIBUTION INTENSITY DATA

Test:U:230.37V I:0.1678A P:37.216W PF:0.9629 Freq:49.99Hz		
UTHDi:0.21% ITHDi:10.39% KDisp:0.9608 Lamp Flux:4987.29x1 lm		
NAME: NU28-LC-39W-1200K-40H	TYPE:	WEIGHT:
SPEC.:	DIM.:	SERIAL No.:
MFR.: Ervan	SUR.:	Shielding Angle:

Table--2

UNIT: cd

C (DEG) □ (DEG)	285	300	315	330	345													
0	1196	1196	1196	1196	1196													
5	1192	1193	1194	1195	1196													
10	1179	1182	1187	1191	1194													
15	1158	1165	1174	1182	1187													
20	1128	1140	1154	1166	1174													
25	1089	1107	1126	1143	1154													
30	1041	1065	1090	1112	1126													
35	985	1014	1046	1073	1091													
40	920	955	993	1026	1047													
45	846	888	932	970	995													
50	765	813	863	905	934													
55	677	731	786	834	865													
60	583	642	702	754	789													
65	483	547	612	667	705													
70	379	448	517	575	615													
75	275	348	419	481	523													
80	177	253	327	391	434													
85	96.0	175	251	316	360													
90	54.6	130	203	264	306													
95	47.1	113	178	233	271													
100	43.9	105	165	215	249													
105	41.9	97.5	153	200	230													
110	39.8	89.8	141	184	212													
115	38.1	82.1	130	167	193													
120	36.7	73.8	116	153	175													
125	35.3	67.2	103	139	158													
130	33.9	61.6	91.7	124	142													
135	33.0	56.8	81.4	108	127													
140	32.2	52.0	72.6	92.9	112													
145	31.7	47.6	64.8	80.5	98.3													
150	31.1	43.7	57.2	69.5	84.1													
155	30.6	40.4	50.5	60.3	70.3													
160	30.1	37.4	44.6	51.1	56.4													
165	29.5	34.4	39.3	43.0	46.3													
170	28.8	31.6	34.3	36.3	37.9													
175	28.4	29.2	30.2	31.0	31.3													
180	28.2	28.2	28.1	28.0	28.0													

C Range: 0 - 360DEG  
C Interval: 15.0DEG  
Test Speed: HIGH  
Temperature:25.3℃  
Operators:QC  
Test Date:2022-06-20

☐ Range: 0 - 180DEG  
☐ Interval: 1.0DEG  
Test System:EVERFINE GO-2000A\_V1 SYSTEM V2.00.458  
Humidity:65.0%  
Test Distance:10.640m [K=1.0000]  
Remarks: